

FPR / FPS 2-T220 4-T220 2-T221 4-T221



- Extremely Low-Ohm
- Small Dimensions
- High Stability
- Low Inductance
- Low Electrical Noise
- Low Temperature Coefficient
- TO220-Housing
- SMD available

SPECIFICATIONS

ELECTRICAL

| | | |
|----------------------------------|---|--|
| Resistor Range | : | 0R002 ... 50R |
| Power Rating | : | 1.5 W (70°C) 15 W with heatsink |
| Thermal Resistance Rthj-c | : | 4.8 K/W |
| Tolerances | : | |
| from 0R002 | : | 2%, 5% / 4-pin version also 1.0% |
| from 0R010 | : | 1%, 2%, 5% 4-pin version also 0.1% and 0.25% |
| from 0R100 | : | 0.5%, 1%, 2%, 5% 4-pin version also 0.1% and 0.25% |
| Stability | : | 0.1%, 0.2%, 0.5% (depends on the stress) |
| Temperature Coefficient | : | ±15 ppm/K (20...60)°C / ±50 ppm/K (-40...130)°C FPR 2-T220/221 R<0R2 TCR-Shift depends on resistor value (see table next page) |
| Max. Current | : | 50 A |
| Insulation Resistance | : | 300 VDC |
| Thermal EMF | : | < 1 µV/K |

ENVIRONMENTAL

| | | |
|------------------------------|---|---------------|
| Operating Temperature | : | -40°C...130°C |
|------------------------------|---|---------------|

MECHANICAL

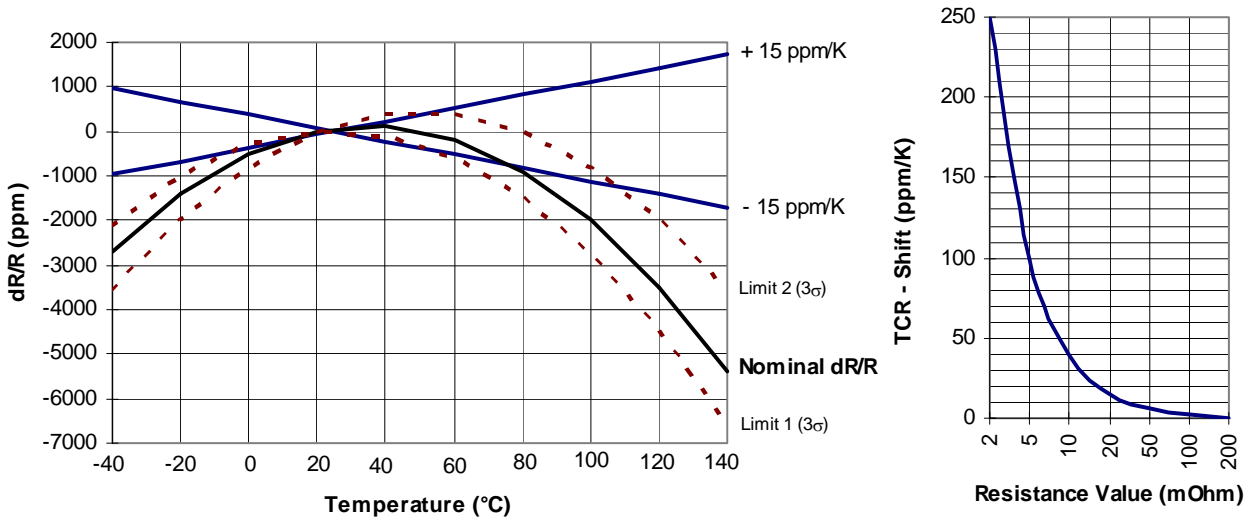
| | | |
|------------------------------|---|--|
| Resistor Material | : | Metalfoil CuNiMn (DIN 17471) |
| Substrate | : | Al ₂ O ₃ or anodized aluminium |
| Housing | : | Epoxidharz or PPS |
| Connector Material | : | Cu tinned, 2-pin or 4-pin |
| Max. torque backplate | : | 1 Nm / T221: 0.8 Nm |

FPR / FPS

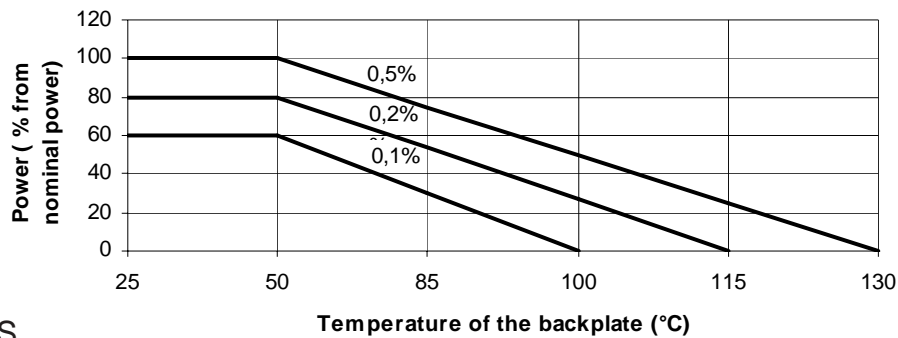
2-T220 4-T220 2-T221 4-T221



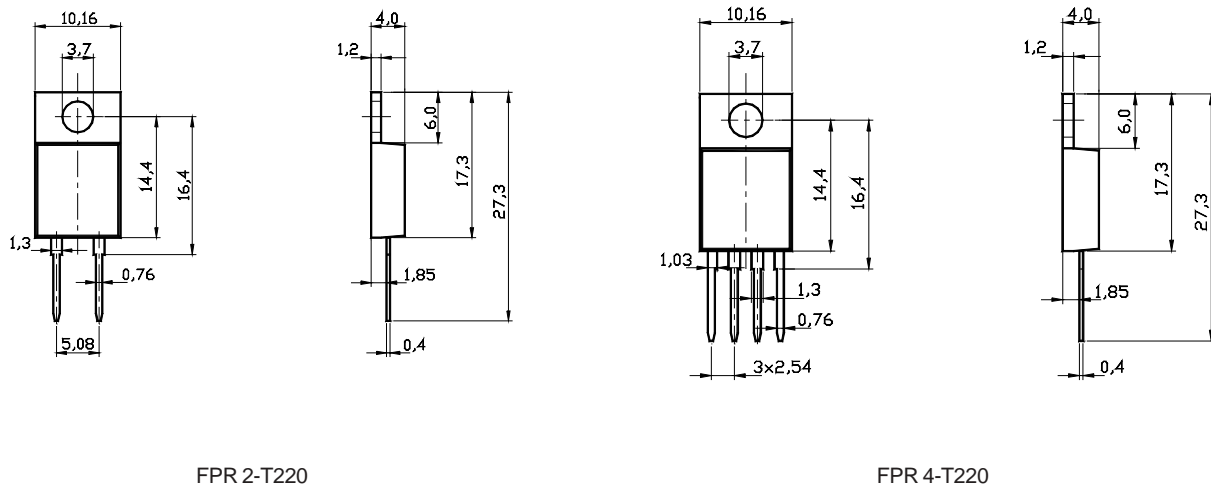
TEMPERATURE COEFFICIENT



DERATING CURVE



DIMENSIONS

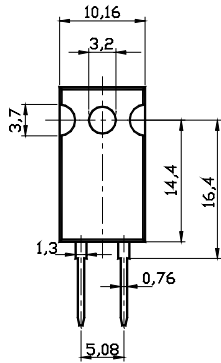


FPR / FPS

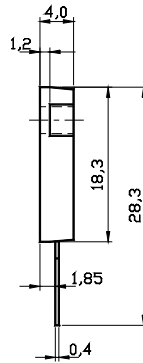
2-T220 4-T220 2-T221 4-T221



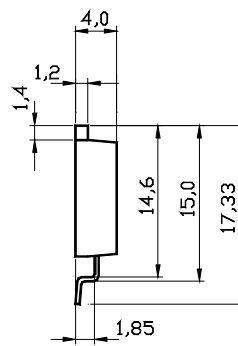
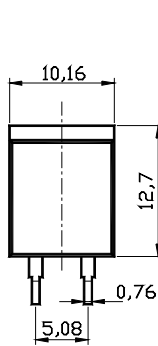
DIMENSIONS



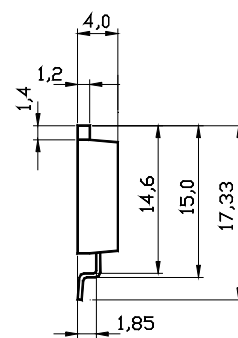
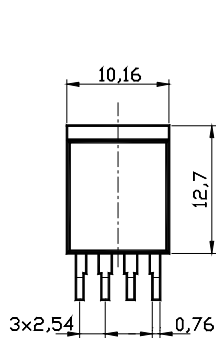
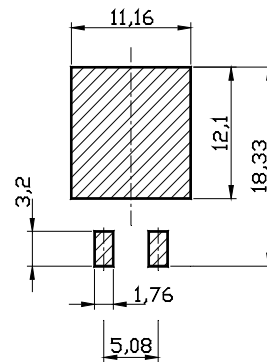
FPR 2-T221



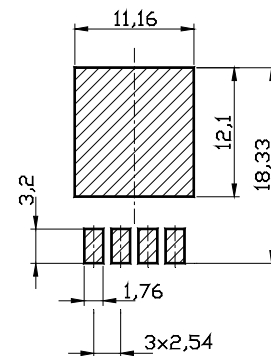
FPR 4-T221



FPS 2-T220



FPS 4-T220



HOW TO ORDER

FPR 2-T220 10R 0.25%
FPR 2-T221 0R068 0.5%

FPS 2-T220 1R0 1%
FPR 4-T221 0R1 0.5%