

TSC & TVC Series

Tubular Power Wirewound Resistors



- Resistances from 1 to 48kOhms
- Power Rating 5 to 225Watts
- Resistance Tolerances to $\pm 5\%$



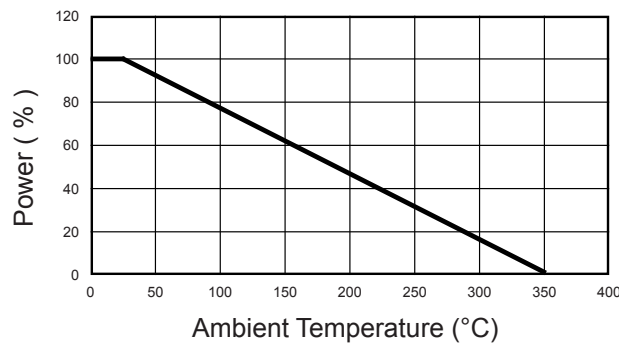
Options:

- Special Tolerances
- Ayrton-Perry / Non-Inductive Windings
- Fixed / Tapped / or Adjustable
- Quick Connect Terminals
- Mounting Brackets

SPECIFICATIONS

Specification	Value
Resistance Range	1 Ω to 48kOhms
Tolerances	$\pm 5\%$ Standard (Call Factory for Other Tolerances)
Temperature Coefficient	>20R : ± 200 ppm/K 1R to 20R : ± 260 ppm/K
Temperature Range	-55°C to +350°C
Dielectric Strength	1000 VAC
Overload	10X Rated Power / 5s

Power Derating Curve



Ordering Information

For Non-Inductive Windings / insert the letter "N" (i.e. TSCN-50)

TSC-50 and larger parts are Available with 0.250 x 0.032 Quick Connect Terminal / Add "QC" to the Part Number.

Push-in friction grip mounting brackets are Available / Add "BKTS" to Part Number

Part Number - Resistance - Tolerance - TCR (If not standard) - Quick-Connects - Brackets

Example: TSC-75 100 Ohm 5% QC BKTS

TSC & TVC Series

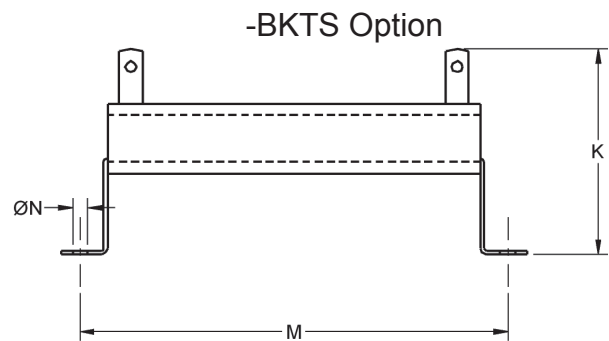
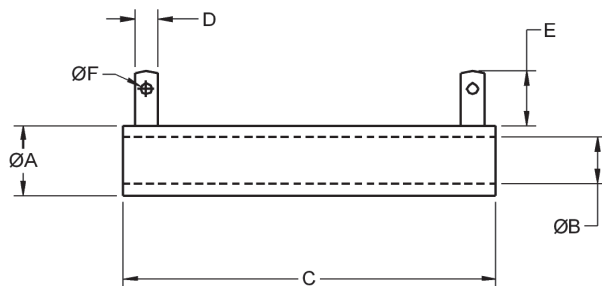
Tubular Power Wirewound Resistors



SPECIFICATIONS (continued)

Type	Wattage Rating	Resistance Range ¹	Dimensions			Terminal Size	BKTS - Mounting Dimensions		
			A ±0.062" [±1.6mm]	B ±0.031" [±0.8mm]	C ±0.062" [±1.6mm]		K ±0.062" [±1.6mm]	M ±0.062" [±1.6mm]	C ±0.020" [±0.5mm]
TSC-5	5	1 - 1k	0.312 [7.9]	0.188 [4.8]	1.00 [25.4]	T1	-	1.44 [36.6]	0.146 [3.7]
TSC-10	10	1 - 1k	0.312 [7.9]	0.188 [4.8]	1.75 [44.4]	T1	0.938 [23.8]	2.19 [55.6]	0.146 [3.7]
TSC-20	20	1 - 10k	0.250 [6.4]	0.188 [4.8]	2.00 [50.8]	T1	-	2.50 [63.5]	0.146 [3.7]
TSC-25	25	1 - 10k	0.563 [14.3]	0.312 [7.9]	2.00 [50.8]	T2	1.688 [42.9]	2.75 [69.9]	0.161 [4.1]
TSC-25A	30	1 - 10k	0.750 [19.1]	0.500 [12.7]	2.00 [50.8]	T2	2.312 [58.7]	2.88 [73.2]	0.161 [4.1]
TSC-25B	30	1 - 10k	0.625 [15.9]	0.453 [11.5]	2.00 [50.8]	T2	1.688 [42.9]	2.63 [66.8]	0.161 [4.1]
TSC-50	50	1.5 - 15k	0.563 [14.3]	0.312 [7.9]	4.00 [102]	T2	1.688 [42.9]	4.75 [121]	0.161 [4.1]
TSC-50A	60	1.5 - 15k	0.750 [19.1]	0.500 [12.7]	4.00 [102]	T2	2.312 [58.7]	4.88 [124]	0.196 [5.0]
TSC-50B	70	1.5 - 15k	0.750 [19.1]	0.547 [13.9]	4.50 [114]	T2	2.312 [58.7]	5.38 [137]	0.196 [5.0]
TSC-75	75	1.5 - 15k	0.563 [14.3]	0.312 [7.9]	6.00 [152]	T2	1.688 [42.9]	6.75 [171]	0.161 [4.1]
TSC-75A	90	2.7 - 20k	0.750 [19.1]	0.500 [12.7]	6.00 [152]	T2	2.312 [58.7]	6.88 [175]	0.196 [5.0]
TSC-100	100	2.7 - 20k	0.750 [19.1]	0.500 [12.7]	6.50 [165]	T2	2.312 [58.7]	7.38 [187]	0.196 [5.0]
TSC-130	130	2.7 - 20k	1.125 [28.6]	0.750 [19.1]	6.50 [165]	T3	2.812 [71.4]	7.38 [187]	0.196 [5.0]
TSC-160	175	3.3 - 39k	1.125 [28.6]	0.750 [19.1]	8.50 [216]	T3	2.812 [71.4]	9.38 [238]	0.196 [5.0]
TSC-200	225	3.3 - 47k	1.125 [28.6]	0.750 [19.1]	10.50 [267]	T3	2.812 [71.4]	11.38 [289]	0.196 [5.0]

¹ For non-inductive windings / divide maximum resistance by 2



Terminal Size	D ±0.010" [±6.4mm]	E ±0.032" [±0.8mm]	F ±0.005" [±0.13mm]
T1	0.188 [4.8]	0.438 [11.1]	0.104 [2.6]
T2	0.250 [6.3]	0.563 [14.3]	0.166 [4.2]
T3	0.312 [7.9]	0.625 [15.9]	0.196 [5.0]