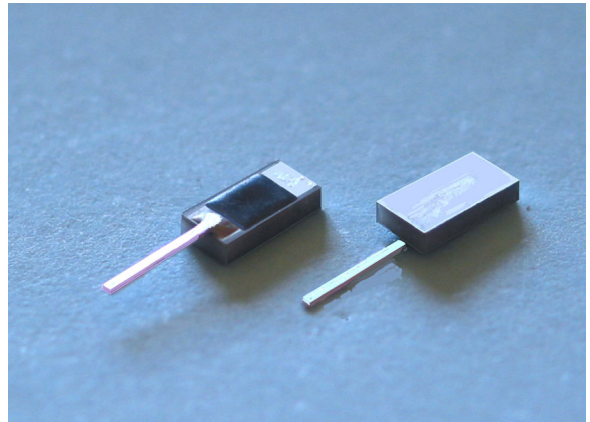


LEADED HIGH POWER TERMINATIONS

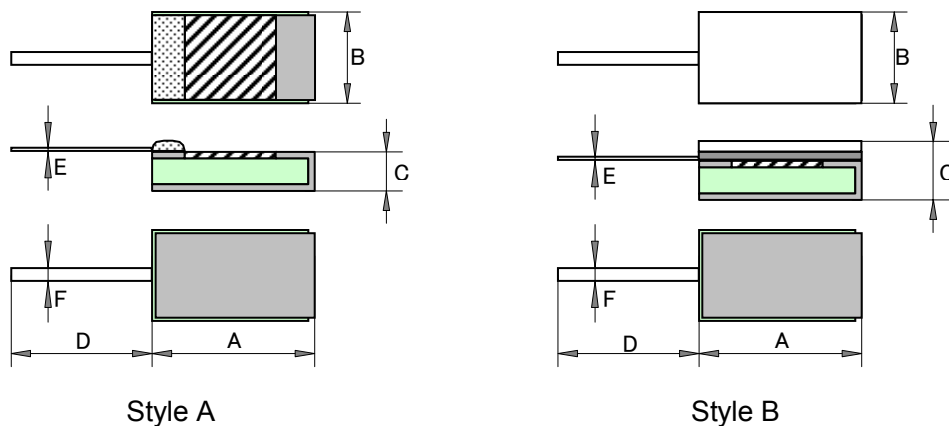
RFTL



Features and Applications

High power surface mount termination for all DC up to 3GHz applications.
 Small size and wide frequency range specifications realized with large heat conducting AlN substrate.
 Sufficient mechanical strength metallization comes from spattered thin film technology.
 50ohm, 100ohm and 200ohm resistance with tolerance 1% and 10W, 20W, 30W, 150W and 250W provided as standard, and other resistance and power also available.
 Long life and temperature stability a result of Ni-Cr thin film technology.
 Applications include power splitters, power combiners, balancing resistors, termination for wide band transformer circuits and termination for isolator/circulators, fixed station of mobile communication electronics, and high power microwave amplifiers.

Style and Dimension (mm)



Type	Power	Style	A	B	C	D	E	F
RFTL05	5	A	2.54	1.27	1.27	6.35	0.1	0.8
RFTL10	10	A	2.54	1.27	1.27	6.35	0.1	0.8
RFTL20	20	A	5.08	2.54	1.27	6.35	0.1	0.8
RFTL30	30	A	5.08	2.54	1.27	6.35	0.1	0.8
RFTL50	50	B	5.08	5.08	2.2MAX	6.35	0.1	0.8
RFTL60	60	B	6.35	6.35	2.2MAX	6.35	0.1	0.8
RFTL100	100	B	5.84	8.89	2.2MAX	6.35	0.1	0.8
RFTL100Y	100	B	8.89	5.84	2.2MAX	6.35	0.1	0.8
RFTL250	250	B	9.52	9.52	2.2MAX	6.35	0.1	0.8

LEADED HIGH POWER TERMINATIONS

RFTL

Ordering Information

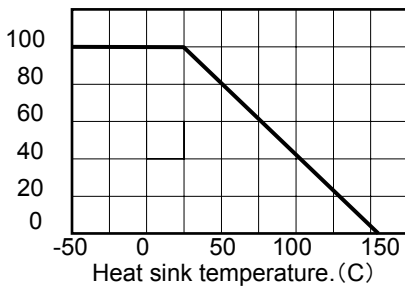
Ordering P/N	Type	Style	TCR	Resistance	Tolerance	Packaging	Remarks
RFTL10A C50 OhmF000	RFTL10	A	C	50 Ohm	F	Tray	Bulk only
RFTL50A C50 OhmF000	RFTL50	A	C	50 Ohm	F	Tray	Bulk only
RFTL100B C100 OhmF000	RFTL100	B	C	100 Ohm	F	Tray	Bulk only
RFTL100YB C100 OhmF000	RFTL100Y	B	C	100 Ohm	F	Tray	Bulk only
RFTL250B C50 OhmF000	RFTL250	B	C	50 Ohm	F	Tray	Bulk only

Specifications and Performances

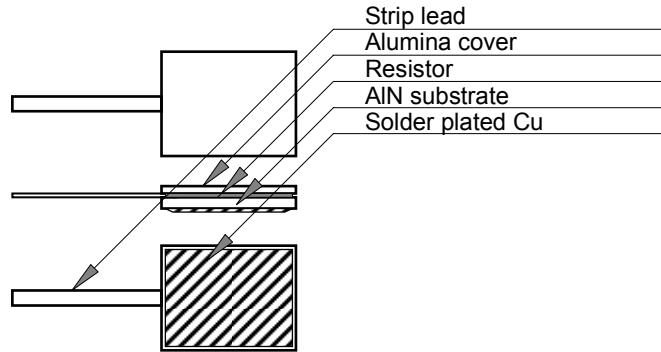
Type	Rating Power	Max. Power	TCR	Resistance	Tolerance	Heat Resistance	VSWR At 1GHz	Rating Temp.	Operating Temp
RFTL05	5W	25W	50ppm/K (C)	50 Ohm 100 Ohm 150 Ohm 200 Ohm	±1% (F)	12.5C/W	1.15	+25C	-55C to +155C
RFTL10	10W	50W				6.5 C/W	1.15		
RFTL20	20W	50W				6.5 C/W	1.15		
RFTL30	30W	50W				6.5 C/W	1.15		
RFTL50	50W	125W				2.5 C/W	1.2		
RFTL60	60W	150W				2.1 C/W	1.2		
RFTL100	100W	200W				1.3 C/W	1.2		
RFTL100Y	100W	250W				1.3 C/W	1.2		
RFTL250	250W	500W				0.5 C/W	1.2		

Derating Curve

% Rated Power



Structure and Materials



Note:

- (1) Rated power is defined at attached on a heat-sink plate of +25 C temperature by soldering. When higher temperature, power shall be derated as above shown curve.
- (2) Termination has two terminals, one is plate tab terminal and other is backing plate that will be attached on heat sink by soldering.
- (3) There is no mechanical moving or vibration between strip terminal attached on strip line circuit and heat sink.
- (4) Other resistance value are available. Please call factory.